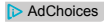


Advertisement



Debian Linux

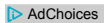
Linux Mint

Install Windows 7

YOU ARE HERE: Home -> Linux -> How To's -> Centos/Redhat -> Install xrdp on CentOS 7 / RHEL 7

Install xrdp on CentOS 7 / RHEL 7

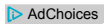
RAJ SEPTEMBER 18, 2014 68 COMMENTS CENTOS 7, RDP, REMOTE, RHEL 7, VNC, XRDp



Debian Linux

Linux Mint

Install Windows 7



Debian Linux

Linux Mint

Install Windows 7




xrdp is an Open Source Remote desktop Protocol server, which allows you to RDP to your Linux server from Windows machine; it is capable of accepting connections from rdesktop, freerdp, and remote desktop clients. This how to will help you to setup xrdp server on CentOS 7 / RHEL 7.




Free Linux Cheat Sheet

The pocket guide to flow direction, chain commands, terminal navigation and more!



Prerequisites:


1. This was written when xrdp is available neither on CentOS repositories nor on EPEL repository, after a lot of Google search; i found desktop repository (<http://li.nux.ro/>) which was having xrdp for CentOS 7 / RHEL 7. We need to manually setup the repository on CentOS 7.
2. Don't forget to [install Gnome on CentOS 7](#)






Automatic (recommended):

Install EPEL and nux Desktop repository rpms.

```
# rpm -Uvh https://dl.fedoraproject.org/pub/epel/7/x86_64/e/epel-release-7-5.noarch.rpm
# rpm -Uvh http://li.nux.ro/download/nux/dextop/e17/x86_64/nux-dextop-release-0-1.e17.nux.noarch.rpm
```

Manual:



-  Install xrdp on CentOS 7 / RHEL 7
SEPTEMBER 18, 2014
-  Install Gnome GUI on CentOS 7 / RHEL 7
AUGUST 4, 2014
-  Install µTorrent (uTorrent) on Ubuntu 14.04
JULY 8, 2014
-  Configure VNC Server on CentOS 7 / RHEL 7
JULY 25, 2014
-  How to install Graylog2 on CentOS 7 / RHEL 7
MARCH 24, 2015

ADVERTISEMENT



Get your team organized

Start Now

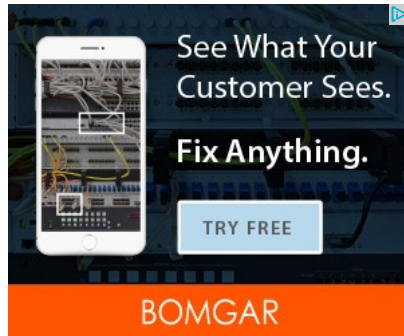


Create a repository file.

```
# vi /etc/yum.repos.d/xrdp.repo
```

Place the following content. Once added, save and close the file.

```
[xrdp]
name=xrdp
baseurl=http://li.nux.ro/download/nux/dextop/el7/x86_64/
enabled=1
gpgcheck=0
```



Installation:

Issue the following command to install xrdp

```
# yum -y install xrdp tigervnc-server
```

You will get the following output, make sure you are getting package from the newly created repository.

```
--> Running transaction check
--> Package xrdp.x86_64 0:0.6.1-2.el7.nux will be installed
--> Finished Dependency Resolution

Dependencies Resolved

=====
Package            Arch          Version           Repository        Size
=====
Installing:
xrdp                x86_64        0.6.1-2.el7.nux  xrdp              271 k

Transaction Summary
=====
Install 1 Package

Total download size: 271 k
Installed size: 1.5 M
Is this ok [y/d/N]: y
Downloading packages:
xrdp-0.6.1-2.el7.nux.x86_64.rpm | 271 kB 00:05
Running transaction check
Running transaction test
Transaction test succeeded
Running transaction
Installing : xrdp-0.6.1-2.el7.nux.x86_64 1/1
Verifying  : xrdp-0.6.1-2.el7.nux.x86_64 1/1

Installed:
xrdp.x86_64 0:0.6.1-2.el7.nux
```

Once it is installed, lets start the xrdp service.

```
# systemctl start xrdp.service
```

xrdp will listen on 3389, lets confirm this by issuing following command.

```
# netstat -antup | grep xrdp
tcp        0      0 0.0.0.0:3389          0.0.0.0:*          LISTEN     1508/xrdp
```

```
tcp 0 0 127.0.0.1:3350 0.0.0.0:* LISTEN 1507/xrdp-sesman
```

By default, services wont auto start after system reboot. Issue the following command to enable the service at system start up.

```
# systemctl enable xrdp.service
```

Next is to create iptables rule to allow rdp connection from the external machines, following command will add the exception for rdp port (3389).

```
# firewall-cmd --permanent --zone=public --add-port=3389/tcp
# firewall-cmd --reload
```

Configure SELinux

```
# chcon --type=bin_t /usr/sbin/xrdp
# chcon --type=bin_t /usr/sbin/xrdp-sesman
```

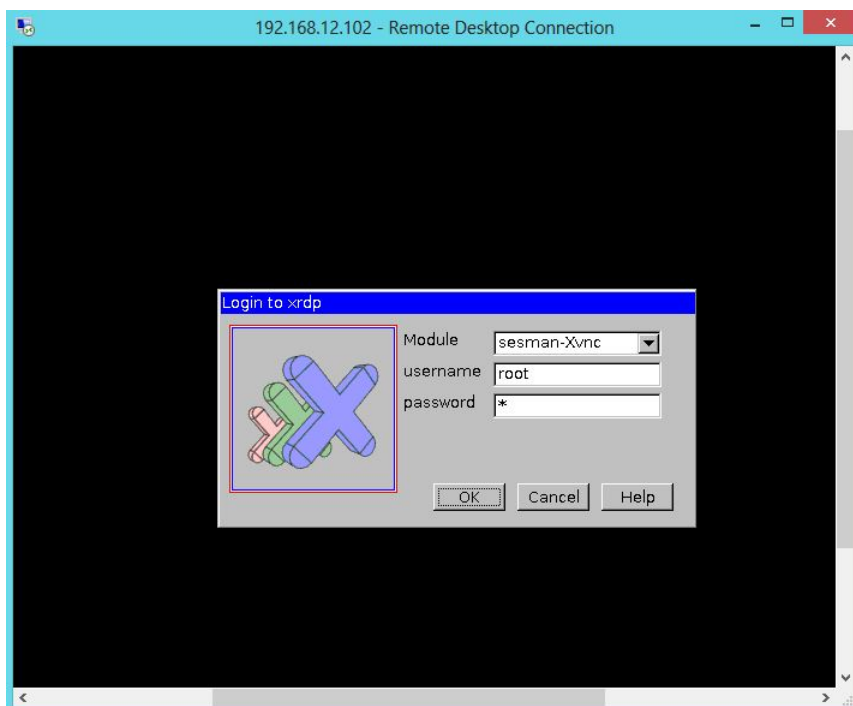
Test:

Now take rdp from any windows machine using Remote Desktop Connection, enter ip address of Linux server in computer field and click on connect.



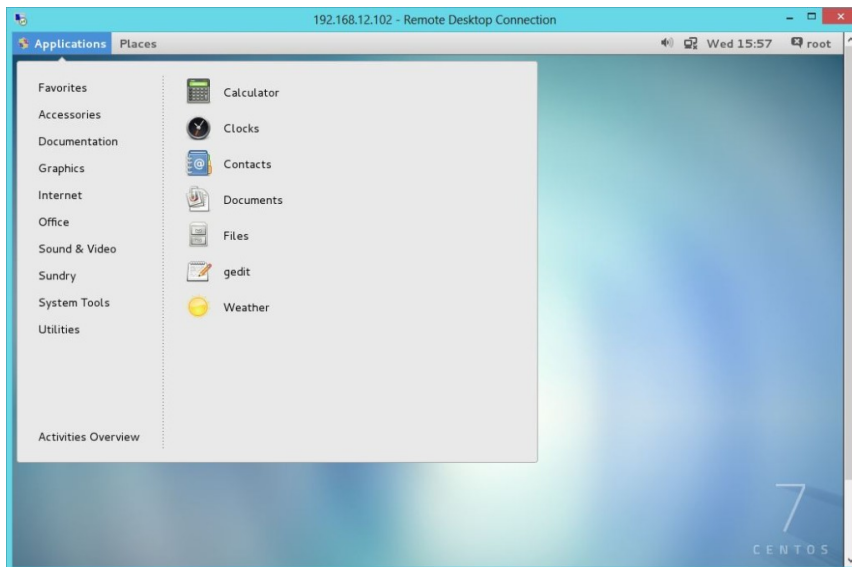
CentOS 7 - xrdp MSTSC

You would be asked to enter the user name and password, you can either use root or any user that you have it on system. Make sure you use module "sesman-Xvnc".



CentOS 7 - xrdp Login page

If you click ok, you will see the processing. In less than a half min, you will get a desktop.



CentOS 7 - xrdp Desktop

That's All, you have successfully configured xRDP on CentOS 7 / RHEL 7. We welcome your comments.

[Linux Server Tutorial](#)

[Cheap Laptop Accessories](#)

[Create your Own Blog](#)

[Graphic Design Tutorials](#)

[Linux Operating System](#)

POSTS YOU MAY LIKE -;)

Powered by 



Free Network Monitor Tool

Ad [solarwinds.com](#)

Install Monitorix on CentOS 7 / Ubuntu...

[itzgeek.com](#)

Convert PC to Thin Client

Ad [stratodesk.com](#)

The Complete Helpdesk App

Ad [Freshdesk](#)

Install xrdp Remote Desktop on...

[itzgeek.com](#)

Configure VNC Server on CentOS...

[itzgeek.com](#)

How to install TeamViewer on...

[itzgeek.com](#)

Enable EPEL Repository for...

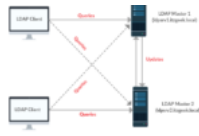
[itzgeek.com](#)

Share This Post      

You might also like:



Install and Configure Nextcloud on CentOS 7 / RHEL 7



Configure OpenLDAP Multi-Master Replication on Linux



Create a Simple Chef Cookbooks to Manage your CentOS / RHEL Infrastructure



Install and Configure phpLDAPAdmin on CentOS 7 / Ubuntu 16.04

Stop Paying For Streaming

Millions of people are cancelling their Netflix account because of this site

[Learn More](#)

Sponsored by Shrewdliving

68 Comments

ITzGeek

Login

Recommend 3

Share

Sort by Newest

Join the discussion...

Pippo La Manica • 2 months ago
Worked perfect on the first try. Many thanks !!
^ | v • Reply • Share

Chris Barry • 7 months ago
Worked perfect on Centos 7 version 7.2.1511 thanks for this.
1 ^ | v • Reply • Share

Ray DeMoss • a year ago
After trying 3 different flavors of Linux, Centos 6 & 7, and Ubuntu, I kept getting "another Xserver is already active on display 10" then fails for every attempt. I've been trying to connect to the Linux box from a Windows 10 box using Remote Desktop Client (RDC). On day 2 I discovered something that must be obvious to everyone else, but I don't see it documented anywhere. The default for (RDC) is to use "High Color (15-bit)", and this always fails with "another Xserver is already active on display 10". When you choose "High Color (16-bit)", it logs in and displays the desktop perfectly.
^ | v • Reply • Share

Comments continue after advertisement

Impeachment For Trump? This Investment May Get Him Fired!

The President-Elect is already stirring controversy after an interview about his economic wealth plan leaked this week.

[Learn More](#)

Sponsored by Freestyle Today

Roman S. • a year ago
Hi. gnome-shell use over 30% each cpu core on rdp session. What can I do with it?
^ | v • Reply • Share

d87 • a year ago
Thank you so much, it worked on the first try.
^ | v • Reply • Share

Mark • a year ago
Worked on the first try. Thanks! My mouse is not tracking correctly, but it is functional.

Before trying your instructions I tried to install xrdp using the instructions on github. Wasted several hours. Binaries in wrong directories, files missing, etc. Finally deleted everything and rebooted, then found your instructions.

Prior to installing the package I disabled firewalld and selinux.

^ | v · Reply · Share ·



Cris Mooney · 2 years ago

Black screen and /var/log/messages note "xrdp-sesman: ** (process:####): WARNING **: software acceleration check failed: Child process exited with code 1":

Remote Desktop from an old machine and/or within Remote Desktop may be problematic for some. Having many machines, I remote desktop into one machine that I use to control others, and thus remote desktop two levels. My first level Remote Desktop on an XP machine apparently does not support "software acceleration" as a client, and so I was unexpectedly getting a black screen connecting to my new VMWare ESXi hosted CentOS setup. No nice Remote Desktop/XRDP GUI message telling me I was on too wimpy a client, just a hanging black screen. After seeing the log message on a parallel ssh session, I found <https://bugs.launchpad.net/ubu...> which seems to implicate unintuitive Gnome version 3 requirements. A "yum list gnome-sess*" reported I had 3.8.4.11.el7, so now that I know what is up I guess I live with it or get very dirty trying workarounds.

^ | v · Reply · Share ·



Kyle Nevlng → Cris Mooney · a year ago

I had this same issue and it turns out that repairing it was as simple as clearing saved credentials from the Windows RDP client.

^ | v · Reply · Share ·



Tamvan · 2 years ago

thanks Mr.Raj. that's very usefull but i have one question.

i success log in to my rdp centos but its blue blank. please give me your advice

thanks a lot

^ | v · Reply · Share ·



akash · 2 years ago

thnx for the guide but its not worked for me .i have tried 2 times the steps but the same result .first it comes a black screen then after some time it says "oh..no something has gone wrong" logout and try again

i am running it on windows azure vm .

can you plz help me out with this .

or any special thing should be done for windows azure.

^ | v · Reply · Share ·

Comments continue after advertisement

Impeachment For Trump? This Investment May Get Him Fired!

The President-Elect is already stirring controversy after an interview about his economic wealth plan leaked this week.

[Learn More](#)

Sponsored by **Freestyle Today**



Mohamed Sidik · 2 years ago

Hello Raj,

Excellent post. Just a minor issue. I can get to to the stage wher I enter my centos uname and password. It then displays the message "Connecting to sesman ip 127.0.0.1 port 3350..... sesman connect ok..... sending login info to session manager, please wait... and then nothing.

Your advice will be highly appreciated :-)

Thanks,

Mohamed

^ | v · Reply · Share ·



Raj → Mohamed Sidik · 2 years ago

 Consider installing gnome and configure SELinux.

Please post error log if you still face any issue

[^](#) | [v](#) | [Reply](#) | [Share](#)

 [billbillbill](#) → [Raj](#) • 2 months ago

I configured selinux as described... same error as Moe.

Nevermind... I restarted the xrdp service and it's working fine. Thank you for the instructions, above!

[^](#) | [v](#) | [Reply](#) | [Share](#)

 [Moiz](#) → [Raj](#) • 2 years ago

Hi Raj,

I am also getting the same error Message. Please elaborate your solution.

Thanks
Moiz Irani

[^](#) | [v](#) | [Reply](#) | [Share](#)

 [excellent](#) • 2 years ago

For one reason, I can't see all of this text, it keeps disappearing? Are you using javascript?

[^](#) | [v](#) | [Reply](#) | [Share](#)

 [Raj](#) → [excellent](#) • 2 years ago

Are u referring command texts

[^](#) | [v](#) | [Reply](#) | [Share](#)

 [giri](#) • 2 years ago

Hi Raj,

I have installed xrdp on RHEL 7.1 (Maipo) VM following the steps mentioned

In the connection log it shows that tcp connected, however, it fails after sending ecodings.

Below is the connection log.

```
Connecting to sesman ip 127.0.0.1 port 3350
sesman connect ok
sending login info to session manager, please wait...
xrdp_mmprocess_login_response: login successful for display
started connecting
connecting to 127.0.0.1 5910
tcp connected
security level is 2 (1= none, 2 = standard)
password ok
sending share flag
receiving pixel format
```

[see more](#)

[^](#) | [v](#) | [Reply](#) | [Share](#)

 [Raj](#) → [giri](#) • 2 years ago

Post me a log

[^](#) | [v](#) | [Reply](#) | [Share](#)

 [giri](#) → [Raj](#) • 2 years ago

Hi Raj,

Here some the warnings/errors in the /etc/var/log/messages log

```
Apr 17 07:25:19 test-server gnome-session: gnome-session[31570]:
WARNING: Could not get session id for session. Check that logind is properly
installed and pam_systemd is getting used at login.
Apr 17 07:25:19 test-server gnome-session[31570]: WARNING: Could not get
session id for session. Check that logind is properly installed and
pam_systemd is getting used at login.
.....
.....
Apr 17 07:25:19 test-server gnome-session: (gnome-settings-daemon:31726):
WARNING: Could not get session id for session. Check that logind is properly
installed and pam_systemd is getting used at login.
```

power-plugin-WARNING **: failed to turn the panel on: Display is not DPMS capable
 Apr 17 07:25:19 test-server xrdp-sesman: Connections: closed:
 127.0.0.1::49859 (Client does not support desktop resize)
 Apr 17 07:25:19 test-server xrdp-sesman: SMsgWriter: framebuffer updates 0
 ^ | v · Reply · Share ·



Raj → giri · 2 years ago

Hi Giri,

Looks like failing due to authentication, try use some other user. please check the pam file too

^ | v · Reply · Share ·



giri → giri · 2 years ago

-----above log continued

```
Apr 17 07:25:19 test-server pulseaudio[31731]: [pulseaudio] socket-
server.c: bind(): Address already in use
Apr 17 07:25:19 test-server pulseaudio[31731]: [pulseaudio] module.c:
Failed to load module "module-esound-protocol-unix" (argument: "");
initialization failed.
Apr 17 07:25:19 test-server pulseaudio[31731]: [pulseaudio] main.c:
Module load failed.
Apr 17 07:25:19 test-server pulseaudio[31731]: [pulseaudio] main.c:
Failed to initialize daemon.
Apr 17 07:25:19 test-server gnome-session: E: [pulseaudio] main.c:
Daemon startup failed.
Apr 17 07:25:19 test-server gnome-session: gnome-session[31570]:
WARNING: App 'pulseaudio.desktop' exited with code 1
Apr 17 07:25:19 test-server gnome-session[31570]: WARNING: App
'pulseaudio.desktop' exited with code 1
Apr 17 07:25:19 test-server goa[31820]: GoaKerberosIdentityManager:
```

[see more](#)

^ | v · Reply · Share ·



giri → giri · 2 years ago

-----above log continued

```
Apr 17 07:25:20 test-server pulseaudio[31843]: [pulseaudio] socket-
server.c: bind(): Address already in use
Apr 17 07:25:20 test-server pulseaudio[31843]: [pulseaudio] module.c:
Failed to load module "module-esound-protocol-unix" (argument: "");
initialization failed.
Apr 17 07:25:20 test-server pulseaudio[31843]: [pulseaudio] main.c:
Module load failed.
Apr 17 07:25:20 test-server pulseaudio[31843]: [pulseaudio] main.c:
Failed to initialize daemon.
Apr 17 07:25:20 test-server pulseaudio[31838]: [pulseaudio] main.c:
Daemon startup failed.
Apr 17 07:25:20 test-server gnome-session: (gnome-settings-
daemon:31726): Gvc-WARNING **: Failed to connect context:
Connection refused
Apr 17 07:25:20 test-server dbus-daemon: dbus[674]: [system]
Activating via systemd: service name='org.freedesktop.locale1'
```

[see more](#)

^ | v · Reply · Share ·



stanislav · 2 years ago

not work:(error

```
[root@linux admin]# systemctl status xrdp.service
```

```
xrdp.service - xrdp daemon
```

```
Loaded: loaded (/usr/lib/systemd/system/xrdp.service; disabled)
```

```
Active: failed (Result: exit-code) since Br 2015-04-14 13:34:41 MSK; 10s ago
```

```
Process: 5176 ExecStart=/usr/sbin/xrdp $XRDPOPTIONS --nodaemon (code=exited,
status=203/EXEC)
```

```
Main PID: 5176 (code=exited, status=203/EXEC)
```

```
ann 14 13:34:41 linux svstemd[1]: Started xrdp daemon
```



```
Jan 14 13:34:41 linux systemd[1]: xrdp.service: main process exited, cod...EC
Jan 14 13:34:41 linux systemd[1]: Unit xrdp.service entered failed state.
Hint: Some lines were ellipsized, use -l to show in full.
```

???

[^](#) | [v](#) | [Reply](#) | [Share](#)[stanislav](#) → [stanislav](#) • 2 years ago

problem complite

```
> sudo chcon --type=bin_t /usr/sbin/xrdp
> sudo chcon --type=bin_t /usr/sbin/xrdp-sesman
> sudo systemctl reenable xrdp.service
> sudo systemctl start xrdp.service
```

[^](#) | [v](#) | [Reply](#) | [Share](#)[Scott](#) • 2 years ago

I had trouble starting xrdp.service on Scientific Linux 7, but this chcon fixed it for me:

<https://bugzilla.redhat.com/sh...>[^](#) | [v](#) | [Reply](#) | [Share](#)[Pragya](#) • 2 years ago

Hi,

I installed xrdp package for RHEL 7. I could log in and as soon after I get a screen which tells me

"Oh no! Something has gone wrong.

A problem has occurred and the system can't recover.

Please logout and try again."

I could not resolve this even after several attempts.

[^](#) | [v](#) | [Reply](#) | [Share](#)[Raj](#) → [Pragya](#) • 2 years ago

Dear pragya,

Please install gnome

[^](#) | [v](#) | [Reply](#) | [Share](#)[Pragya](#) → [Raj](#) • 2 years ago

Hi Raj,

I have already installed gnome using the command:

yum groupinstall "Server with GUI"

The fact is that I am able to do mstsc on the machine. xrdp asks for credentials, and after I enter the credentials, I get a login success message.

But after this I get a white screen giving the above stated error :/

[^](#) | [v](#) | [Reply](#) | [Share](#)[anonymous](#) → [Pragya](#) • 2 years ago

Try by disabling SELinux

[^](#) | [v](#) | [Reply](#) | [Share](#)[LordBeeg](#) → [anonymous](#) • 2 years ago

disabling SELinux worked for me. I've run XRDP on both RH 6 and Ubuntu 14.04. Of course, many believe that disabling SELinux is the sledgehammer approach. So you may want to take a more surgical approach depending on the needs of your environment.

[^](#) | [v](#) | [Reply](#) | [Share](#)

Comments continue after advertisement

Impeachment For Trump? This Investment May Get Him Fired!

The President-Elect is already stirring controversy after an interview about his economic wealth plan leaked this week.

[Learn More](#)Sponsored by [Freestyle Today](#)[Matt](#) • 2 years ago



Unfortunately I cannot get this to work. I have the packages installed, and I have started the service without any errors. The service is not listening on ports 3389 or 3350. It is like the service did not start, but then I looked at the log file and confirmed that the service started. From what I can see in iptables, all traffic is allowed. Running RHEL 7.1

[^](#) | [v](#) · [Reply](#) · [Share](#)



Khaled · 2 years ago

Great post worked perfect, Thank you.

[^](#) | [v](#) · [Reply](#) · [Share](#)



Sathishkumar · 2 years ago

Hi, I have installed CentOS 7 and installed xrdp as per your instruction. yes it works!!
But my problem is, when i connecting through rdp(thin client) its display scaling goes out of focus. Part of the desktop only visible(Screen resolution changes to 1920x1200. But my Monitor highest resolution is 1366x768.)
Please help me!!!!!!!!!!!!!!!!!!!!!!

[^](#) | [v](#) · [Reply](#) · [Share](#)



nick · 2 years ago

perfect, thank you

[^](#) | [v](#) · [Reply](#) · [Share](#)



JDAIII · 2 years ago

I have installed according to the guide.

Question is, I have gnome and xfce installed and I want the rdp to default to xfce. how would this be done? I can log in at physical workstation with xfce if I select it at the login screen, but can't seem to get the rdp to default to xfce for users logging in. It always defaults to gnome.

I tried:

1. placing startxfce4 at the front of the list in /etc/xrdp/startwm.sh (didn't work)
2. commenting out wm_start and placing startxfce4 in it's place (didn't work)
3. Created a ~/.xsession file and populated it with startxfce4 (didn't work)

[^](#) | [v](#) · [Reply](#) · [Share](#)



Ashish varma · 2 years ago

this work good for us but there is a problem
we connect with the the same user on multiple machine
and both work separately with that particular user
is there any solution for this issue..?????

[^](#) | [v](#) · [Reply](#) · [Share](#)



Raj → **Ashish varma** · 2 years ago

Dear ashish,

Thats not abnormal. It is designed to do so. Instead you configure VNC for this issue.

[^](#) | [v](#) · [Reply](#) · [Share](#)

Comments continue after advertisement

Impeachment For Trump? This Investment May Get Him Fired!

The President-Elect is already stirring controversy after an interview about his economic wealth plan leaked this week.

[Learn More](#)

Sponsored by **Freestyle Today**



Vladimir · 2 years ago

Ok, I have Gnome GUI and I have tigervnc-server installed. I still get the connecting to 127.0.0.1 5910 error – problem connecting

Any ideas how to solve this?

I have followed your guide to the letter.

[^](#) | [v](#) · [Reply](#) · [Share](#)



Vladimir → Vladimir • 2 years ago

Hmm... Xvnc :10 can be started without any errors or warnings.

in the xrdp log I have found this:

```
[20150127-12:12:42] [INFO ] starting Xvnc session...
[20150127-12:12:52] [ERROR] X server for display 10 startup timeout
[20150127-12:12:52] [INFO ] starting xrdp-sessvc - xpid=11314 - wmpid=11313
[20150127-12:12:52] [ERROR] X server for display 10 startup timeout
[20150127-12:12:52] [ERROR] another Xserver is already active on display 10
[20150127-12:12:52] [DEBUG] aborting connection...
```

vncserver can be started without errors or warnings.

I still get the
connecting to 127.0.0.1 5910
error – problem connecting

Any ideas how to solve this?

Thanks!

^ | v • Reply • Share ›



Morten Vinding Svendsen → Vladimir • a year ago

I have just spend most of the day trying to track down this.

It turned out that the RDP client in Windows 7 is incompatible if set to use 15 bit color!

Any other colordepth than 15 bit worked perfect (16, 24 and 32 all worked).

^ | v • Reply • Share ›



Raj → Vladimir • 2 years ago

Hi,

Stop the xrdp service and remove .X* files in tmp mount point.

```
rm -rf /tmp/.X*
```

Then reboot the server and check it.

PS: Assuming that xrdp will start automatically.

^ | v • Reply • Share ›



Rich • 2 years ago

Raj, instruction work great, my problem is with auto scaling. was working fine with centos 6.6. I could rdp into it and what ever resolution my local window was it would auto scale. would like the same function if possible.

thanks.

^ | v • Reply • Share ›



Kherrscher • 2 years ago

Raj, thanks for your clear and concise step by step instructions. They worked flawlessly for me.

^ | v • Reply • Share ›



Kazi • 2 years ago

Very good document. Took me 5 minute to setup RDP for CentOS7.

^ | v • Reply • Share ›



Thierry • 2 years ago

Hi I am trying to connect to a fresh install with GUI but no success yet even when following word for word this tutorial

```
connecting to sesman IP 127.0.0.1 port 3350
sesman connect ok
sending login info to session manager, please wait...
xrdp_mm_process_login_response:login successful for display
started connecting
connecting to 127.0.0.1 5910
error – problem connecting
```

Best practices for CentOS 7... (truncated)

Package epeel-release-7-2.noarch.rpm is not available anymore, it is 7-5 instead.

Any hint?

^ | v · Reply · Share ·



Raj → Thierry · 2 years ago

Pls install Gnome GUI

^ | v · Reply · Share ·



Cary · 2 years ago

Hey Raj,

I have followed your guide step-by-step and I get "error - problem connecting". Here's what I've done:

- Installed CentOS 7 Minimal
- Installed EPEL and nux Dextop (Automated)
- Installed xrdp tigervnc-server
- systemctl start xrdp.service
- systemctl enable xrdp.service
- Configured firewall

Again, I can connect enough to see Connection Log and get the following:

```
connecting to sesman IP 127.0.0.1 port 3350
sesman connect ok
sending login info to session manager, please wait...
xrdp_mm_process_login_response:login successful for display
started connecting
connecting to 127.0.0.1 5910
error - problem connecting
```

There has to be one step missing from this guide, but for the life of me I can't find it. I've installed xrdp the "much" harder way, so I was really hoping this would work. If you're able to see what step I am missing, please do let me know! Thanks much!!!

^ | v · Reply · Share ·



Raj → Cary · 2 years ago

Dear cary,

Install GUI and try xrdp

<http://www.itzgeek.com/how-tos...>

^ | v · Reply · Share ·



Cary → Raj · 2 years ago

Raj,

Thanks for the reply. I realized that Gnome (a WM) must be installed after reading slowly through all the posts. I knew I had brainfarted. Once it installed, I'm good to go. Might want to add that above as a pre-req just so folks who tend not to RTFM see it called out. Thanks again!

Cheers...

^ | v · Reply · Share ·



Raj → Cary · 2 years ago

Thanks Cary, have updated as Pre-Req.

^ | v · Reply · Share ·

Load more comments

Stop Paying For Streaming

Millions of people are cancelling their Netflix account because of this site

[Learn More](#)

Sponsored by **Shredliving**

© Copyright 2016 ITzGeek · Designed by ITzGeek